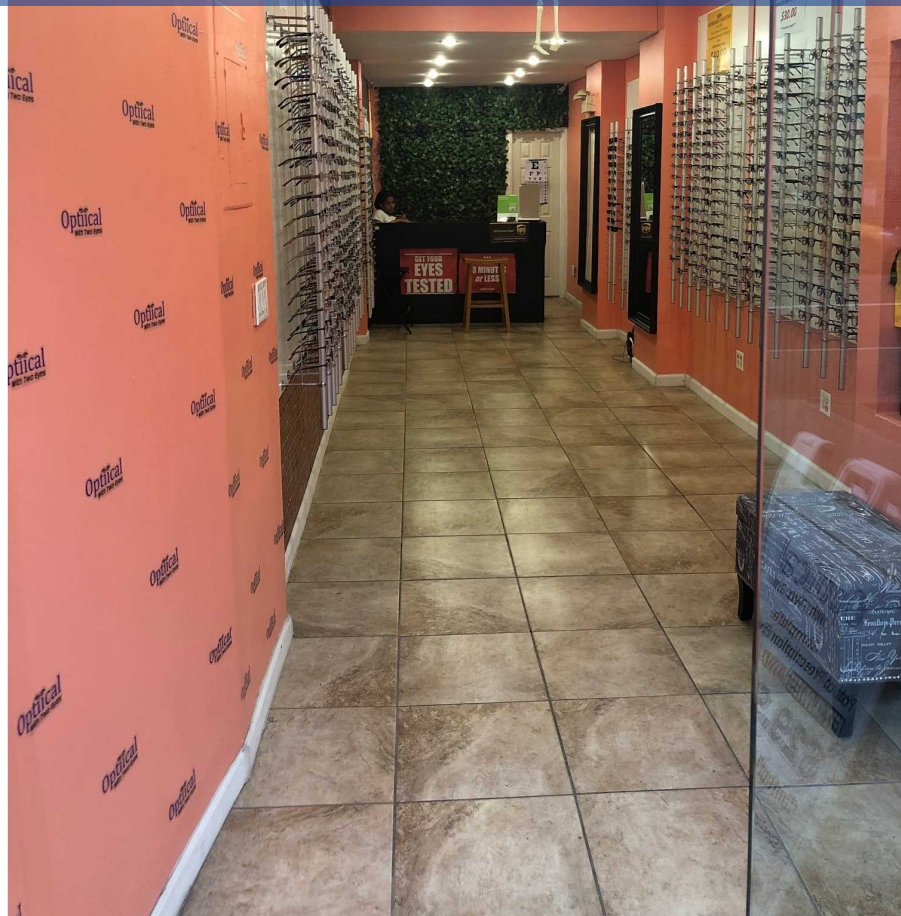


Jermancommercial.com

329 E 14th St Manhattan

Manhattan, NY 10003



Property Highlights

- Heavy Foot Traffic
- Taxes Included
- Retail Shopping Area

Price: \$5,000

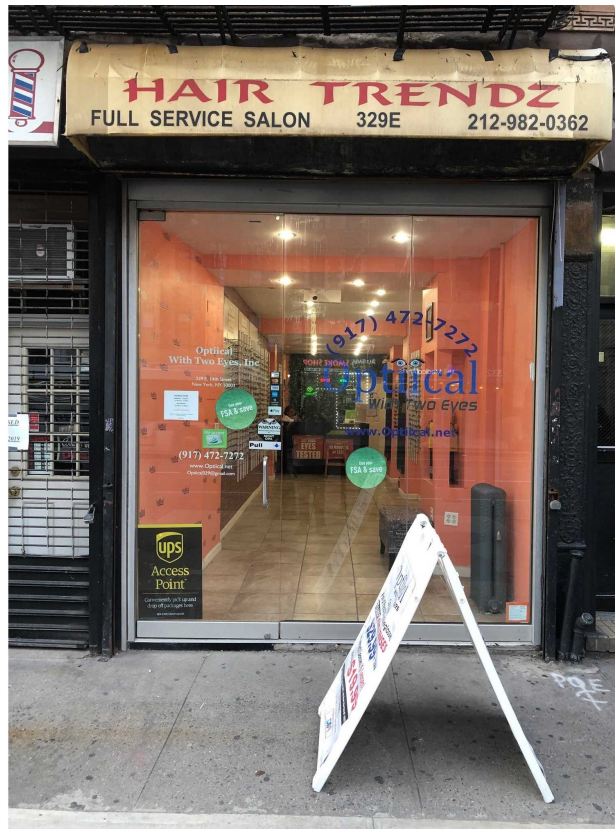
JEREMY WILLIAMS

(347) -33-4-26 41

jeremy.williams@exprealty.com

PROPERTY SUMMARY

329 EAST 14TH STREET



Property Summary

Lease Rate:	\$120 per sqft
Lease Term:	Negotiable
Available SF:	500
Office SF:	
Frontage:	25ft
Year Built:	1910
Renovated:	No
Parking:	No
Parking Ratio:	
HVAC:	
Lighting:	
Zoning:	C1-6A

Property Overview

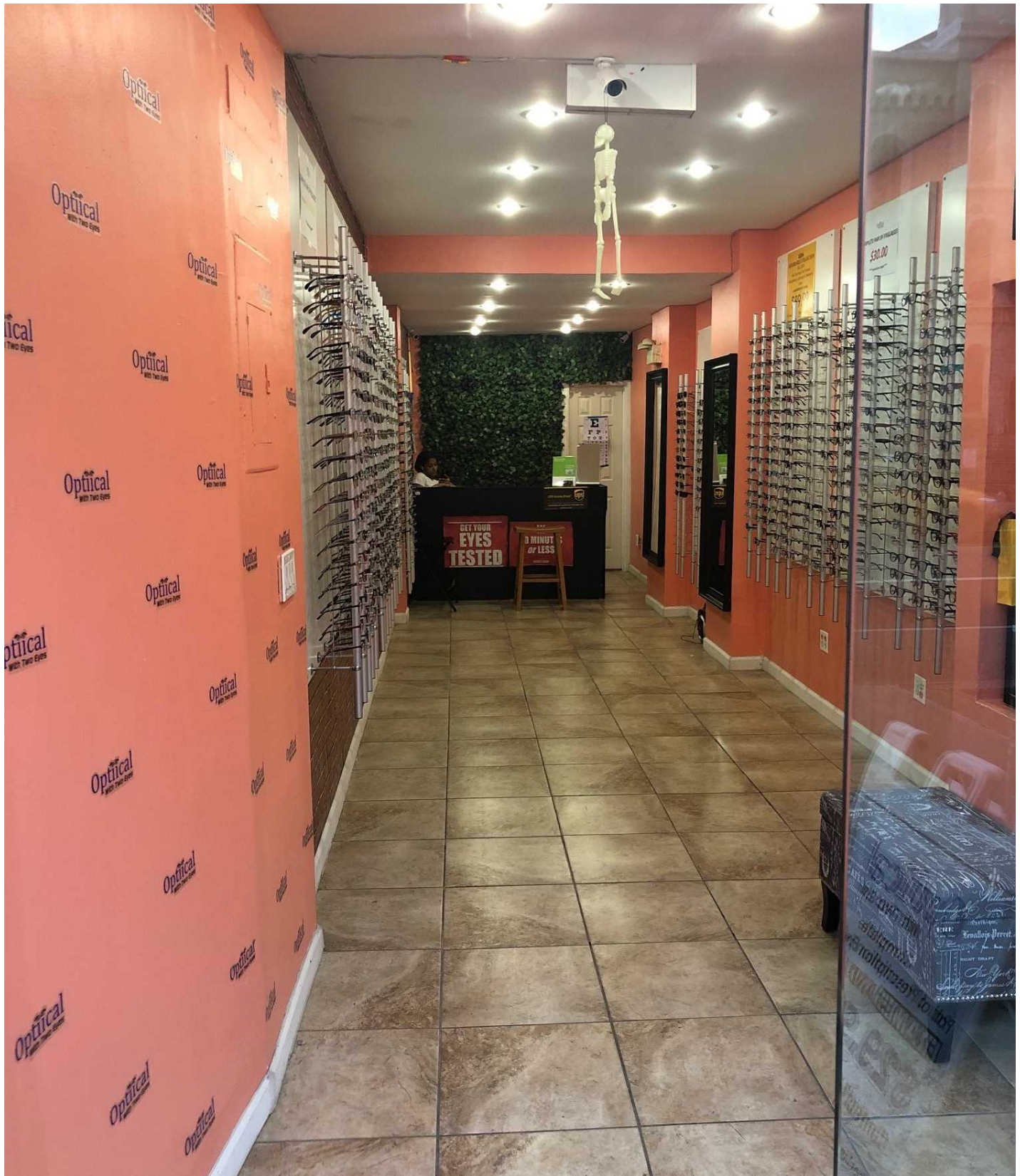
Prime real estate in east village 14th St, previously was an optical glass store...landlord is considering all uses except SMOKE SHOPS & DELI'S.

Location Overview

East Village shopping, retail, and restaurant area. Nearby Trains: L,4,5,6,N,Q,R,W. Nearby Buses: M14D-SBS, M14A-SBS, M15, M15-SBS

PROPERTY PHOTOS

329 EAST 14TH STREET



EXP REALTY
777 Westchester Avenue, Suite 101
White Plains, NY 10604

JEREMY WILLIAMS
O: (347) -33-4-26 41
C: 347-334-2641
jeremy.williams@exprealty.com

PROPERTY PHOTOS

329 EAST 14TH STREET



EXP REALTY
777 Westchester Avenue, Suite 101
White Plains, NY 10604

JEREMY WILLIAMS
O: (347) -334-26 41
C: 347-334-2641
jeremy.williams@exprealty.com

PROPERTY PHOTOS

329 EAST 14TH STREET

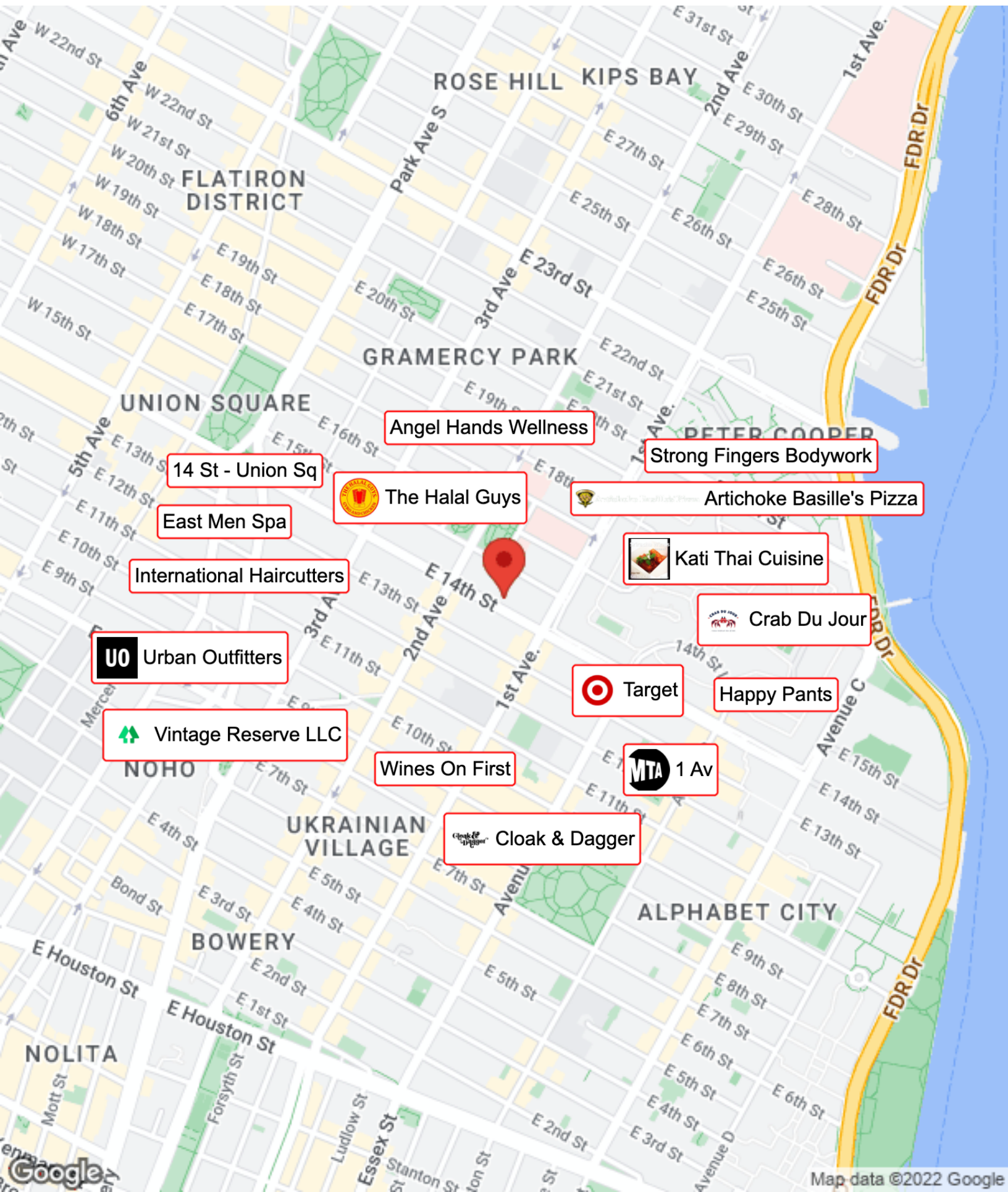


EXP REALTY
777 Westchester Avenue, Suite 101
White Plains, NY 10604

JEREMY WILLIAMS
O: (347) -33-4-26 41
C: 347-334-2641
jeremy.williams@exprealty.com

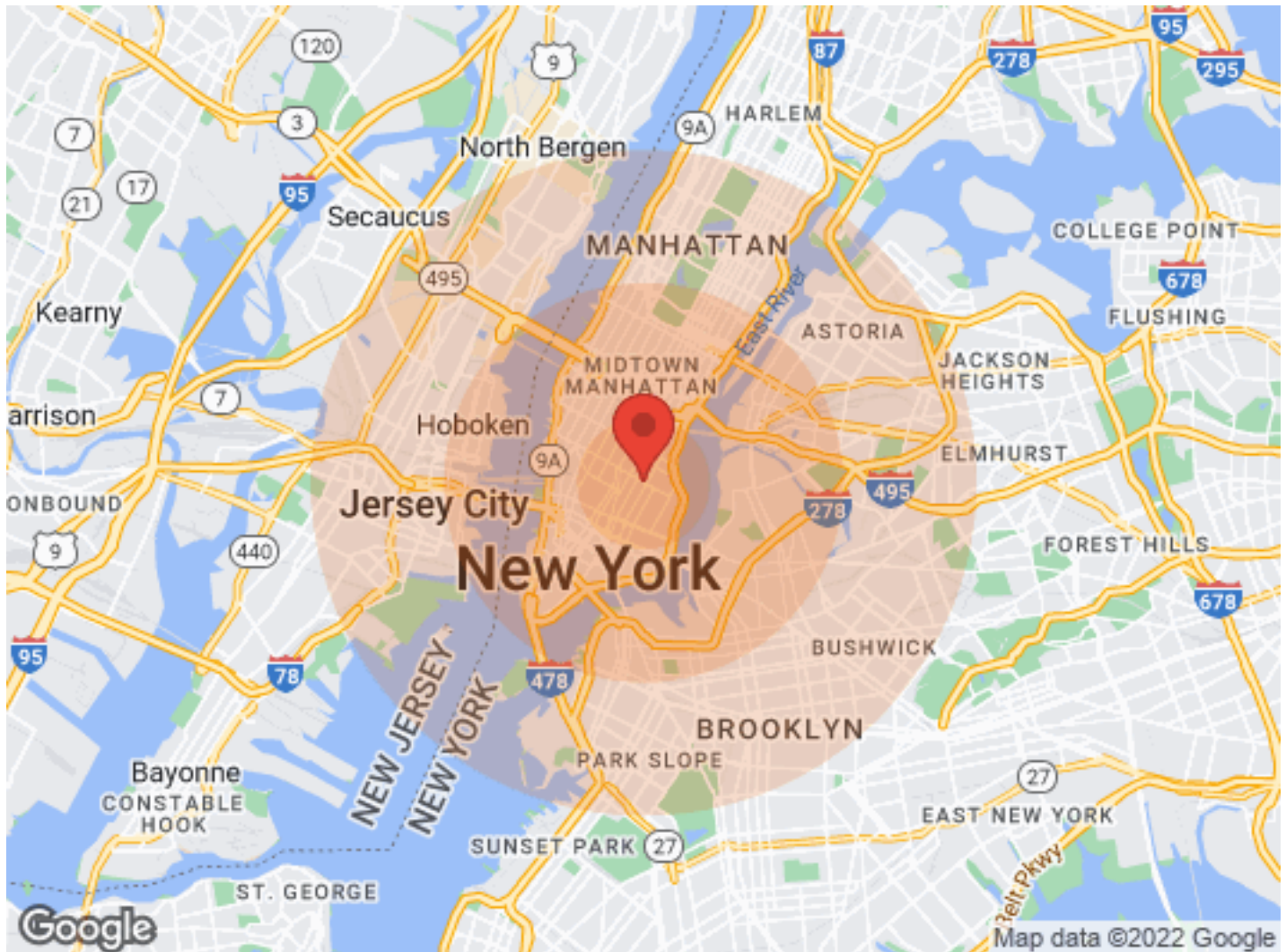
BUSINESS MAP

329 EAST 14TH STREET



DEMOGRAPHICS

329 EAST 14TH STREET



Population	1 Mile	3 Miles	5 Miles	Income	1 Mile	3 Miles	5 Miles
Male	127,791	553,765	1,378,830	Median	\$86,228	\$76,048	\$59,561
Female	135,569	569,493	1,447,326	< \$15,000	18,999	78,211	189,540
Total Population	263,360	1,123,258	2,826,156	\$15,000-\$24,999	10,209	42,973	111,072
				\$25,000-\$34,999	8,267	35,773	97,922
				\$35,000-\$49,999	11,047	46,055	130,624
				\$50,000-\$74,999	18,826	73,335	192,373
				\$75,000-\$99,999	14,305	58,070	136,612
				\$10,000-\$149,999	20,138	80,505	166,133
				\$150,000-\$199,999	11,406	44,688	84,062
				> \$200,000	23,492	95,350	161,785
Age	1 Mile	3 Miles	5 Miles	Housing	1 Mile	3 Miles	5 Miles
Ages 0-14	27,682	150,874	446,001	Total Units	149,723	638,997	1,423,861
Ages 15-24	13,579	80,179	250,387	Occupied	138,632	568,176	1,288,368
Ages 55-64	38,662	152,072	361,769	Owner Occupied	28,020	137,656	318,070
Ages 65+	47,641	203,016	464,653	Renter Occupied	110,612	430,520	970,298
				Vacant	11,091	70,821	135,493
Race	1 Mile	3 Miles	5 Miles				
White	182,967	766,040	1,653,602				
Black	13,719	69,901	387,791				
Am In/AK Nat	235	1,084	5,199				
Hawaiian	16	121	243				
Hispanic	41,204	180,173	774,624				
Multi-Racial	47,202	203,732	833,596				

EXP REALTY
777 Westchester Avenue, Suite 101
White Plains, NY 10604

JEREMY WILLIAMS
O: (347)-334-26 41
C: 347-334-2641
jeremy.williams@exprealty.com

DISCLAIMER

329 EAST 14TH STREET



All materials and information received or derived from eXp Realty its directors, officers, agents, advisors, affiliates and/or any third party sources are provided without representation or warranty as to completeness, veracity, or accuracy, condition of the property, compliance or lack of compliance with applicable governmental requirements, developability or suitability, financial performance of the property, projected financial performance of the property for any party's intended use or any and all other matters.

Neither eXp Realty its directors, officers, agents, advisors, or affiliates makes any representation or warranty, express or implied, as to accuracy or completeness of the any materials or information provided, derived, or received. Materials and information from any source, whether written or verbal, that may be furnished for review are not a substitute for a party's active conduct of its own due diligence to determine these and other matters of significance to such party. eXp Realty will not investigate or verify any such matters or conduct due diligence for a party unless otherwise agreed in writing.

EACH PARTY SHALL CONDUCT ITS OWN INDEPENDENT INVESTIGATION AND DUE DILIGENCE.

Any party contemplating or under contract or in escrow for a transaction is urged to verify all information and to conduct their own inspections and investigations including through appropriate third-party independent professionals selected by such party. All financial data should be verified by the party including by obtaining and reading applicable documents and reports and consulting appropriate independent professionals. eXp Realty makes no warranties and/or representations regarding the veracity, completeness, or relevance of any financial data or assumptions. eXp Realty does not serve as a financial advisor to any party regarding any proposed transaction.

All data and assumptions regarding financial performance, including that used for financial modeling purposes, may differ from actual data or performance. Any estimates of market rents and/or projected rents that may be provided to a party do not necessarily mean that rents can be established at or increased to that level. Parties must evaluate any applicable contractual and governmental limitations as well as market conditions, vacancy factors and other issues in order to determine rents from or for the property. Legal questions should be discussed by the party with an attorney. Tax questions should be discussed by the party with a certified public accountant or tax attorney. Title questions should be discussed by the party with a title officer or attorney. Questions regarding the condition of the property and whether the property complies with applicable governmental requirements should be discussed by the party with appropriate engineers, architects, contractors, other consultants, and governmental agencies. All properties and services are marketed by eXp Realty in compliance with all applicable fair housing and equal opportunity laws.

EXP REALTY

777 Westchester Avenue, Suite 101
White Plains, NY 10604

PRESENTED BY:

JEREMY WILLIAMS

O: (347) -33-4-26 41

C: 347-334-2641

jeremy.williams@exprealty.com

The calculations and data presented are deemed to be accurate, but not guaranteed. They are intended for the purpose of illustrative projections and analysis. The information provided is not intended to replace or serve as substitute for any legal, accounting, investment, real estate, tax or other professional advice, consultation or service. The user of this software should consult with a professional in the respective legal, accounting, tax or other professional area before making any decisions.