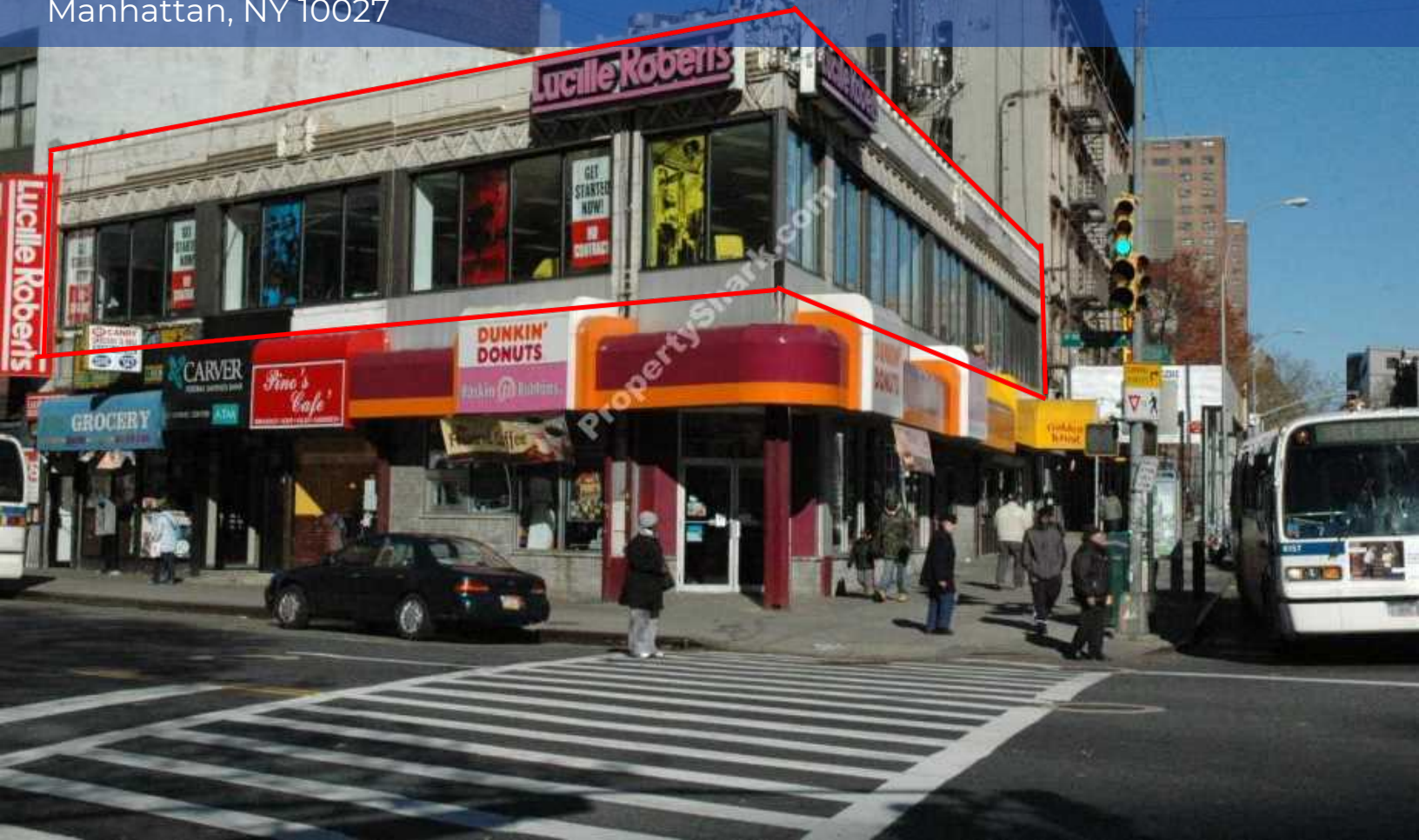


Jermancommercial.com

501 W 125th St Harlem

Manhattan, NY 10027



Property Highlights

- Wide Open Space
- 2nd Floor
- Good For: Event space, studios, gyms, Office
- Taxes Included in rent

Price: \$15,000

JEREMY WILLIAMS

(347) -33-4-26 41

jeremy.williams@exprealty.com

PROPERTY SUMMARY

501 WEST 125TH STREET



Property Summary

Lease Rate:	\$38.25
Lease Term:	Negotiable
Available SF:	4,720
Office SF:	
Frontage:	70 ft
Year Built:	1926
Renovated:	
Parking:	
Parking Ratio:	
HVAC:	
Lighting:	
Zoning:	R7A, C2-4

Property Overview

Wide open space available for immediate occupancy...formerly Lucille Roberts gym...all uses considered

Location Overview

Central Harlem's retail shopping area. Nearby Trains: 1,2,3,A,B,C,D. Nearby Buses: M104, M101, M11, M125

PROPERTY PHOTOS

501 WEST 125TH STREET



EXP REALTY
777 Westchester Avenue, Suite 101
White Plains, NY 10604

JEREMY WILLIAMS
O: (347)-33-4-26 41
C: 347-334-2641
jeremy.williams@exprealty.com

PROPERTY PHOTOS

501 WEST 125TH STREET



EXP REALTY
777 Westchester Avenue, Suite 101
White Plains, NY 10604

JEREMY WILLIAMS
O: (347)-33-4-26 41
C: 347-334-2641
jeremy.williams@exprealty.com

PROPERTY PHOTOS

501 WEST 125TH STREET

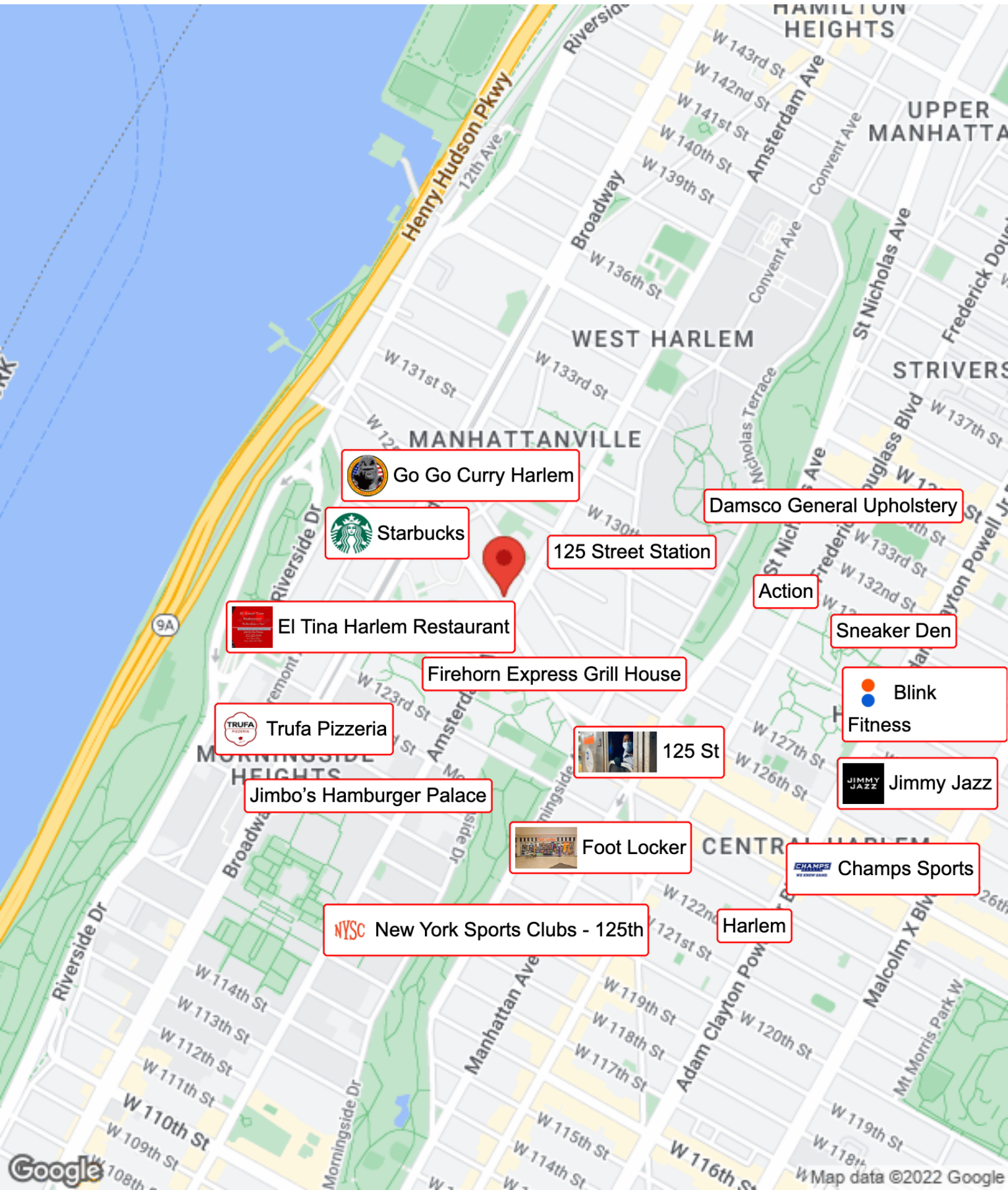


EXP REALTY
777 Westchester Avenue, Suite 101
White Plains, NY 10604

JEREMY WILLIAMS
O: (347) -334-26 41
C: 347-334-2641
jeremy.williams@exprealty.com

BUSINESS MAP

501 WEST 125TH STREET



DEMOGRAPHICS

501 WEST 125TH STREET



Population	1 Mile	3 Miles	5 Miles
Male	86,262	582,018	1,210,468
Female	96,732	660,682	1,336,632
Total Population	182,994	1,242,700	2,547,100

Age	1 Mile	3 Miles	5 Miles
Ages 0-14	29,960	220,587	451,657
Ages 15-24	19,548	136,348	277,279
Ages 55-64	21,090	149,525	303,796
Ages 65+	25,248	193,732	389,136

Race	1 Mile	3 Miles	5 Miles
White	54,850	545,571	1,149,556
Black	75,514	301,745	520,785
Am In/AK Nat	935	6,935	15,241
Hawaiian	25	283	519
Hispanic	63,215	537,289	1,181,024
Multi-Racial	81,206	621,958	1,332,606

Income	1 Mile	3 Miles	5 Miles
Median	\$35,948	\$40,153	\$41,646
< \$15,000	18,711	109,293	209,650
\$15,000-\$24,999	8,860	54,956	114,921
\$25,000-\$34,999	7,841	45,850	95,517
\$35,000-\$49,999	8,221	56,847	120,612
\$50,000-\$74,999	9,704	71,213	151,784
\$75,000-\$99,999	6,060	45,366	96,104
\$10,000-\$149,999	6,024	52,322	108,517
\$150,000-\$199,999	2,847	25,336	50,335
> \$200,000	3,939	54,592	99,742

Housing	1 Mile	3 Miles	5 Miles
Total Units	75,511	543,028	1,132,455
Occupied	68,578	500,926	1,033,839
Owner Occupied	10,171	108,806	217,970
Renter Occupied	58,407	392,120	815,869
Vacant	6,933	42,102	98,616

EXP REALTY
777 Westchester Avenue, Suite 101
White Plains, NY 10604

JEREMY WILLIAMS
O: (347)-334-26 41
C: 347-334-2641
jeremy.williams@exprealty.com

DISCLAIMER

501 WEST 125TH STREET



All materials and information received or derived from eXp Realty its directors, officers, agents, advisors, affiliates and/or any third party sources are provided without representation or warranty as to completeness, veracity, or accuracy, condition of the property, compliance or lack of compliance with applicable governmental requirements, developability or suitability, financial performance of the property, projected financial performance of the property for any party's intended use or any and all other matters.

Neither eXp Realty its directors, officers, agents, advisors, or affiliates makes any representation or warranty, express or implied, as to accuracy or completeness of the any materials or information provided, derived, or received. Materials and information from any source, whether written or verbal, that may be furnished for review are not a substitute for a party's active conduct of its own due diligence to determine these and other matters of significance to such party. eXp Realty will not investigate or verify any such matters or conduct due diligence for a party unless otherwise agreed in writing.

EACH PARTY SHALL CONDUCT ITS OWN INDEPENDENT INVESTIGATION AND DUE DILIGENCE.

Any party contemplating or under contract or in escrow for a transaction is urged to verify all information and to conduct their own inspections and investigations including through appropriate third-party independent professionals selected by such party. All financial data should be verified by the party including by obtaining and reading applicable documents and reports and consulting appropriate independent professionals. eXp Realty makes no warranties and/or representations regarding the veracity, completeness, or relevance of any financial data or assumptions. eXp Realty does not serve as a financial advisor to any party regarding any proposed transaction.

All data and assumptions regarding financial performance, including that used for financial modeling purposes, may differ from actual data or performance. Any estimates of market rents and/or projected rents that may be provided to a party do not necessarily mean that rents can be established at or increased to that level. Parties must evaluate any applicable contractual and governmental limitations as well as market conditions, vacancy factors and other issues in order to determine rents from or for the property. Legal questions should be discussed by the party with an attorney. Tax questions should be discussed by the party with a certified public accountant or tax attorney. Title questions should be discussed by the party with a title officer or attorney. Questions regarding the condition of the property and whether the property complies with applicable governmental requirements should be discussed by the party with appropriate engineers, architects, contractors, other consultants, and governmental agencies. All properties and services are marketed by eXp Realty in compliance with all applicable fair housing and equal opportunity laws.

EXP REALTY

777 Westchester Avenue, Suite 101
White Plains, NY 10604

PRESENTED BY:

JEREMY WILLIAMS

O: (347) -33-4-26 41

C: 347-334-2641

jeremy.williams@exprealty.com

The calculations and data presented are deemed to be accurate, but not guaranteed. They are intended for the purpose of illustrative projections and analysis. The information provided is not intended to replace or serve as substitute for any legal, accounting, investment, real estate, tax or other professional advice, consultation or service. The user of this software should consult with a professional in the respective legal, accounting, tax or other professional area before making any decisions.